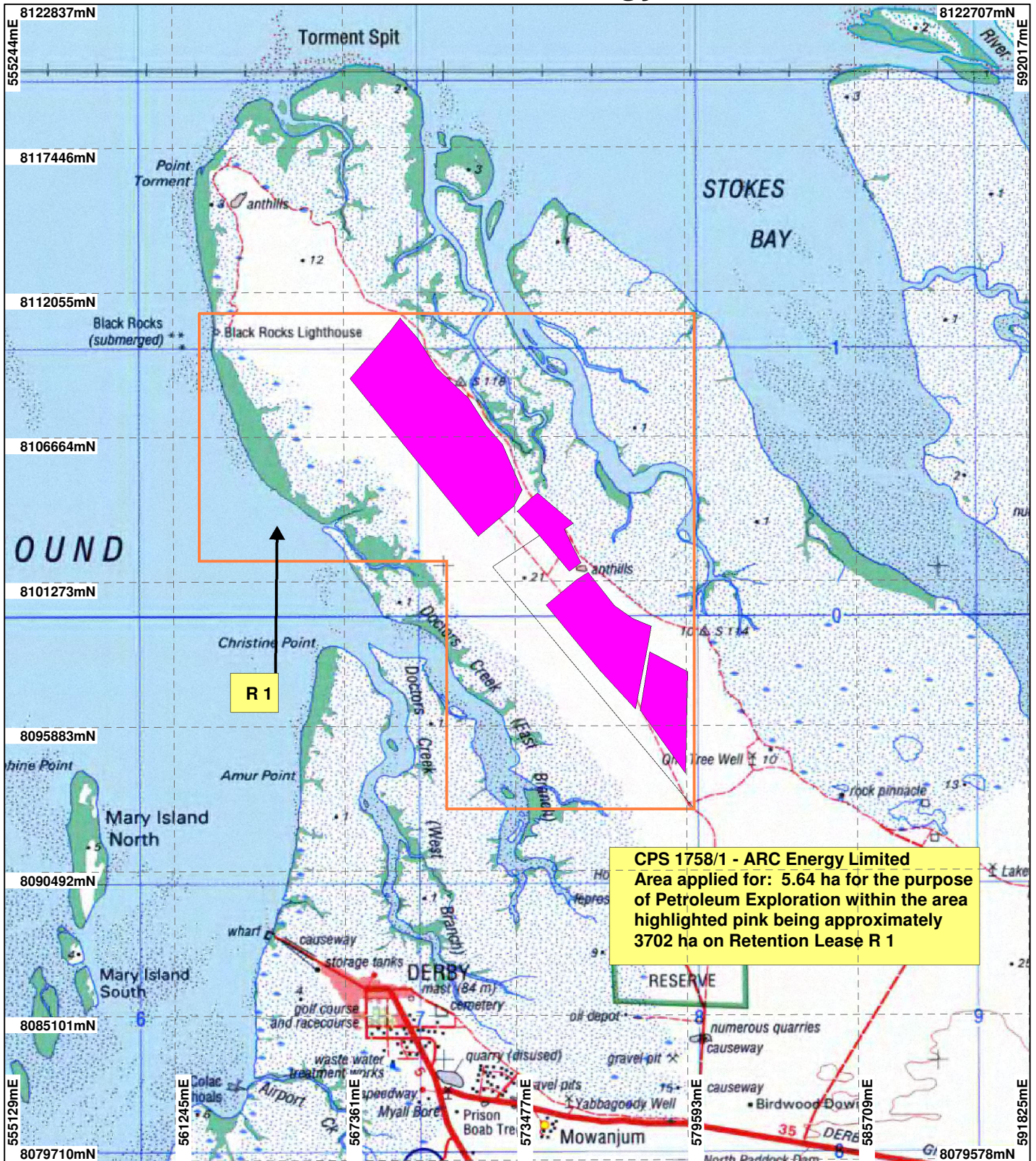


CPS 1758/1 - ARC Energy Limited



CPS 1758/1 - ARC Energy Limited
 Area applied for: 5.64 ha for the purpose of Petroleum Exploration within the area highlighted pink being approximately 3702 ha on Retention Lease R 1

LEGEND

Clearing Instruments

- Areas Applied to Clear
- Petroleum Titles - DOIR
- NATMAP 250K Series Mapping - GA 08/03



0 5 km

Scale 1:200000

(Approximate when reproduced at A4)

Geocentric Datum Australia 1994

Note: the data in this map have not been projected. This may result in geometric distortion or measurement inaccuracies.

..... Date

Officer with delegated authority under Section 20 of the Environmental Protection Act 1986

Information derived from this map should be confirmed with the data custodian acknowledged by the agency acronym in the legend.



WA Crown Copyright 2002